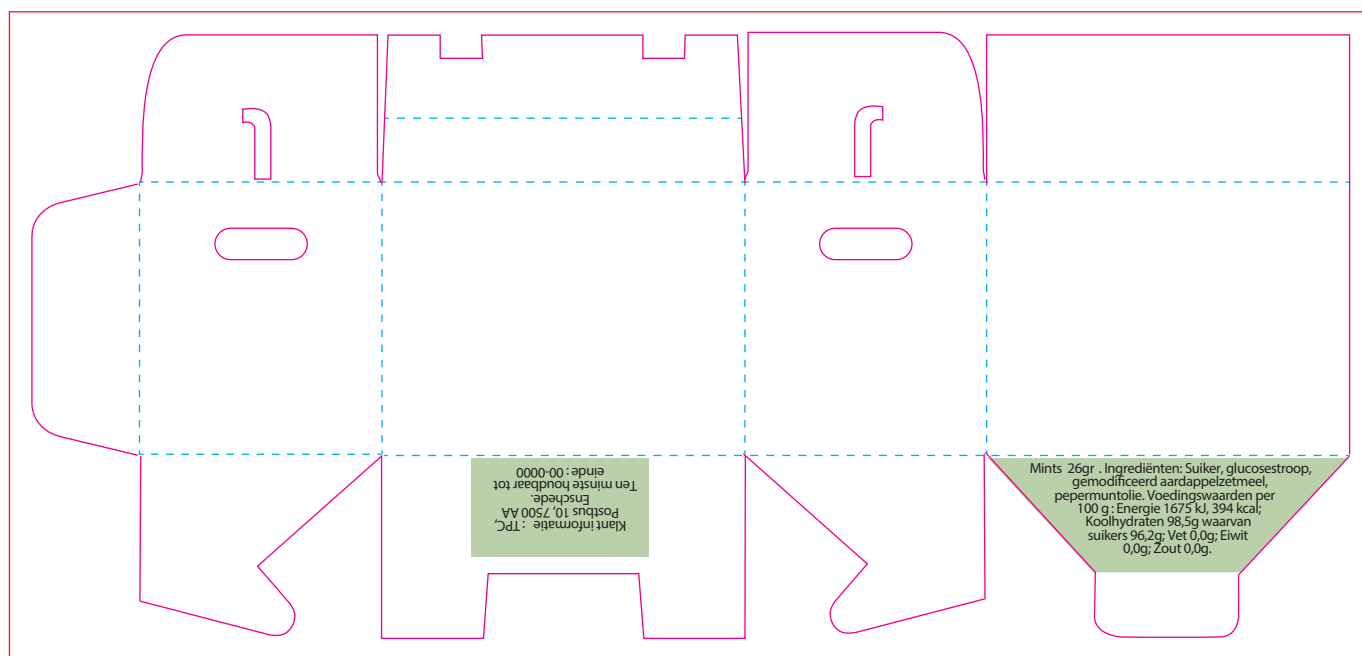


MOVING BOX IMPERIAL MINT

Print size
174 x 80 mm



- Printing surface
- Folding line
- Bleed
- No text here
- Ingredients

When desired, you can change the language, colour or position of the ingredients

NL

Mints 26gr. Ingrediënten: Suiker, glucosestroop, gemodificeerd aardappelzetmeel, pepermuntolie.

Voedingswaarden per 100 g: Energie 1675 kJ, 394 kcal; Koolhydraten 98,5g waarvan suikers 96,2g; Vet 0,0g; Eiwit 0,0g; Zout 0,0g. **Klant informatie:** TPC, Postbus 10, 7500 AA Enschede. **Ten minste houdbaar tot einde:** 00-0000

EN

Mints 26gr. Ingredients: Sugar, glucose syrup, modified potato starch, peppermint oil. Nutritional values per 100g: Energy 1675 kJ, 394 kcal; Carbohydrates 98,5g of which sugars 96,2g; Fat 0,0g; Protein 0,0g; salt 0,0g.

Customer information: TPC, PO Box 10, 7500 AA Enschede. Best before end: 00-0000

DU

Minze 26gr. Zutaten: Zucker, Glukosesirup, modifizierte Kartoffelstärke, Pfefferminzöl. Nährwerte pro 100 g: Energie 1675 kJ, 394 kcal; Kohlenhydrate 98,5g davon Zucker 96,2g; Fett 0,0g; Protein 0,0g; Salz 0,0g
Kundeninformation: TPC, Postfach 10, 7500 AA Enschede. Mindestens haltbar bis Ende: 00-0000