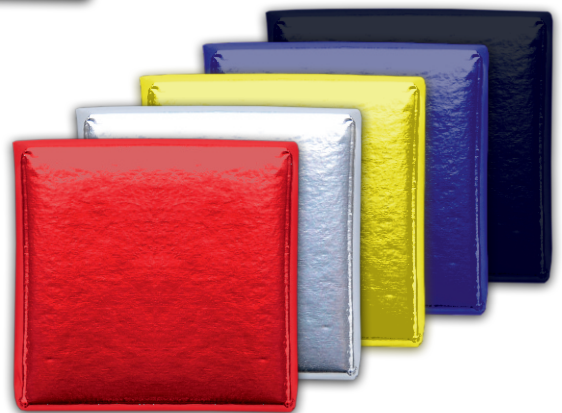
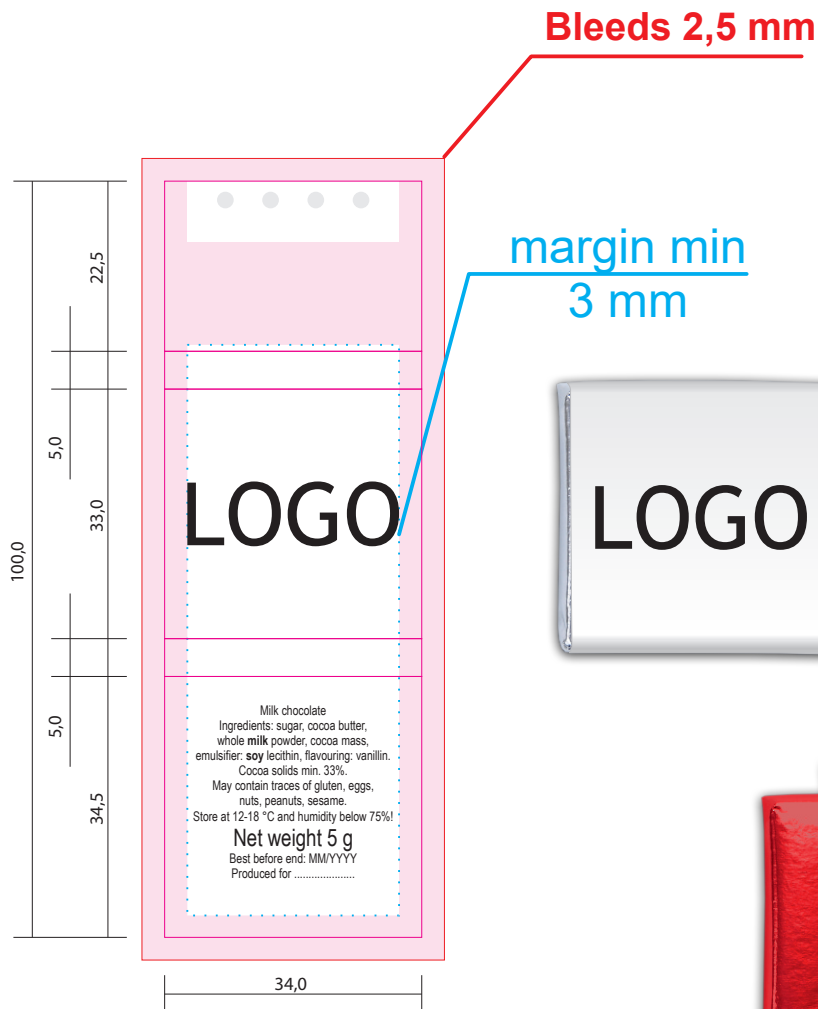


**MERRY**CHRISTMAS



**Ingredients information is required.**

Milk chocolate  
 Ingredients: sugar, cocoa butter, whole milk powder, cocoa mass, emulsifier: soy lecithin, flavouring: vanillin.  
 Cocoa solids min. 33%.  
 May contain traces of gluten, eggs, nuts, peanuts, sesame.  
 Store at 12-18 °C and humidity below 75%!  
**Net weight 5 g**  
 Best before end: MM/YYYY  
 Produced for .....

Dark chocolate  
 Ingredients: cocoa mass, sugar, cocoa butter, emulsifier: soy lecithin, flavouring: vanillin.  
 Cocoa solids min. 54%.  
 May contain traces of milk, gluten, eggs, nuts, peanuts, sesame.  
 Store at 12-18 °C and humidity below 75%!  
**Net weight 5 g**  
 Best before end: MM/YYYY  
 Produced for .....

White chocolate  
 Ingredients: sugar, cocoa butter, whole milk powder, emulsifier: soy lecithin, flavouring: vanillin.  
 May contain traces of gluten, eggs, nuts, peanuts, sesame.  
 Store at 12-18 °C and humidity below 75%!  
**Net weight 5 g**  
 Best before end: MM/YYYY  
 Produced for .....