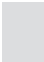



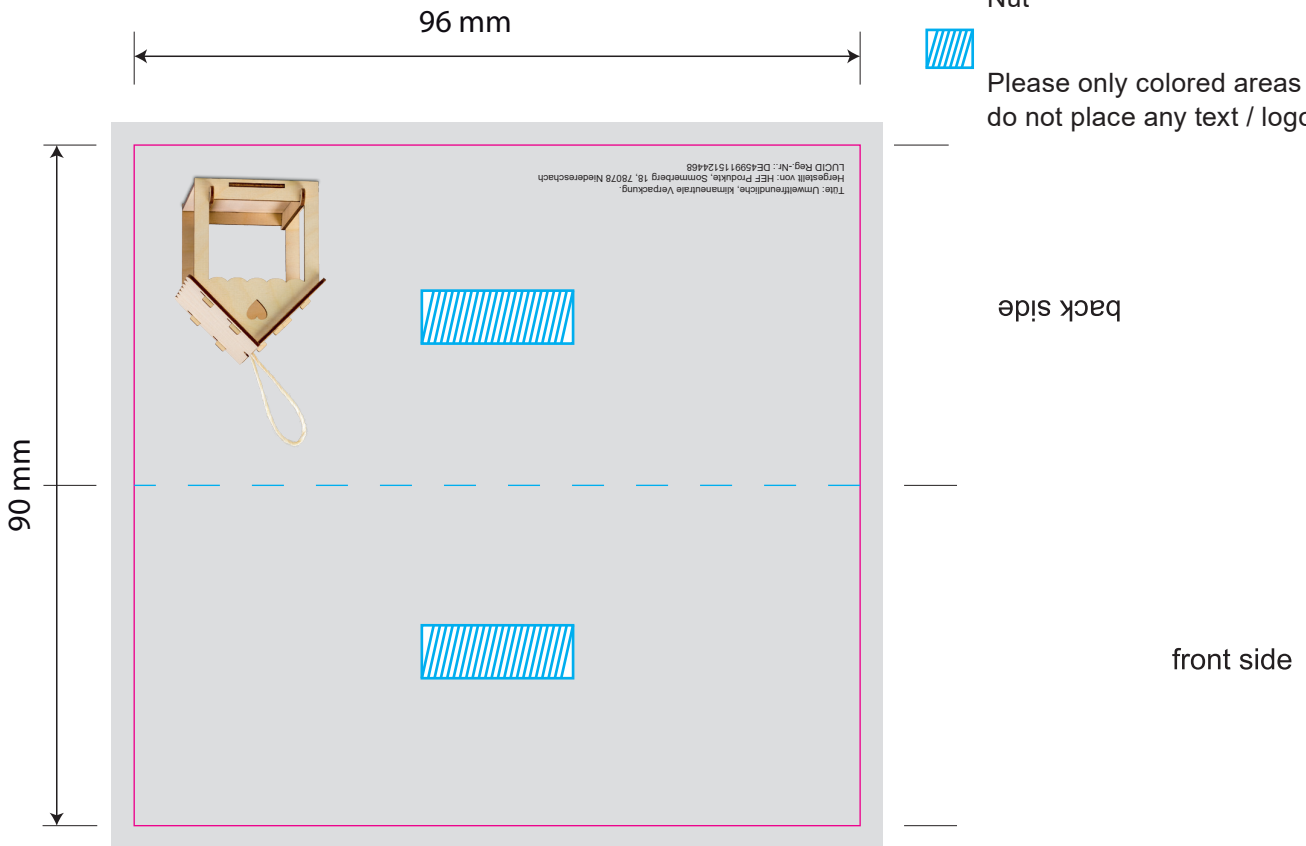


-  full surface
- Please provide 3 mm bleed
-  Cut
-  Nut
-  Please only colored areas / pictures, do not place any text / logos here



*Please refer to the tips on providing data in our important information.*

*To make sure everything goes smoothly, please:*

*only work on our design level.*

*do not change positioning & trim mark level.*

*do not change or delete the special colour for "positioning and measurements" & "full surface".*

*Images and writings must be embedded*



birdhouse