




# B&C AIR JU 801

LIGHT WEIGHT JACKET / WITH LINING


6.4 EDITION


## The windbreaker with lining

-  **OUT:** 100% Taffeta Nylon
- IN:** Body lining: 100% polyester mesh  
Sleeve lining: 100% polyester Taffeta
-  S - M - L - XL - XXL - XXXL\*
-  5 pcs/pack & 30 pcs/carton

\* ONLY AVAILABLE IN BLACK, NAVY AND RED



Concealed hood with Velcro® closing tabs 

Adjustable hood with thick lace 




Fold-away jacket (K-Way® system) in the pocket with double slider zip

Full zip opening with zip pull

2 front pockets with zips

Elasticated cuffs

Adjustable bottom hem

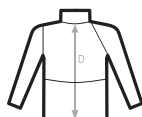
Easy access for decoration via a zip opening in the lining 



-  Windproof
-  Showerproof
-  Water-repellent



C2+ RAGLAN SLEEVE



### SIZES [CM]

B&C AIR JU 801	XS	S	M	L	XL	XXL	XXXL
A HALF CHEST	-	59	64	69	74	79	84
B BODY LENGTH FROM NECK POINT	-	72	75	78	81	84	87
C SLEEVE LENGTH	-	55,5	57	58,5	60	61,5	63
D CENTER BACK LENGTH	-	71	74	77	80	83	86

JACKET  
COLLECTION